

If you cannot view the email below, [please view online](#)



[Visit Website](#) | [Contact Us](#) | [Subscribe](#) | [Update your Profile](#) | [Send to a Friend](#)

November 2010

## Essential Reading

It's new and it's must have reading for anyone wanting to explore the Queensland wine capital. The new Granite Belt Visitor Guide (pictured) will be launched at the Brisbane Good Food & Wine Show later this week.

The new official guide to [Stanthorpe](#) and Granite Belt includes a host of useful visitor information, maps, lists of tourist operators, attractions and services. All in a pocket size 75 page DL book and its free!



The popular full colour guide is produced annually by Granite Belt Wine & Tourism. From this coming weekend copies will also be available through the Stanthorpe Visitor Information Centre phone 1800 SO COOL or your favourite Granite Belt tourist operator. It will also be available electronically through the official website [granitebeltwinecountry.com.au](http://granitebeltwinecountry.com.au).

## In This Issue

[Essential Reading](#)  
[Good Food & Wine](#)  
[Food, Wine & Events](#)  
[Legends in the Lavender](#)  
[Get the best from us](#)

[More...](#)

## Brisbane Good Food & Wine Show

It is just a few days before the doors open to Brisbane's most popular consumer show for wine and food lovers. From Friday 5 to Sunday 7 November the Brisbane Convention Centre is home to producers from across the nation plus your local favourites from the Granite Belt.



Organisers say the show is like Australia's biggest gourmet deli, most fascinating kitchen shops and delicious restaurants - and it's all waiting for you to discover! With an eclectic mix of celebrity theatre, wine theatre, gourmet cooking school and educational events, this is a perfect opportunity for you to visit your favourite Granite Belt food and wine producers. Our wineries who will be setting up shop there for three days will be Ballandean, Golden Grove, Felsberg, Granite Ridge, Harrington Glen, Robert Channon, Pyramids Road, Sirromet, Summit and Symphony Hill. The Bramble Patch and Bella Rosa's will also be showcasing food products from the Granite Belt. See you there!



### Food



Summer is just around the corner which means new season produce becomes abundant.

At this time of the year an army of backpackers descend on [Stanthorpe](#) to begin the season picking stone fruit and fresh vegetables. The Granite Belt offers an array of fruit and veggies - [check out the seasonal list here](#).

Picking your own fresh berries has never been easier than at Strawberry Fields, on the Stanthorpe bypass. If you don't want to get your hands dirty then pick up a pack from the fridge for your picnic, fruit bowl or a colour gift for someone you love. Or for a complete berry experience head south to Glen Aplin to the Bramble Patch and near neighbour Jamworks

Mmm... berry delicious!

[More...](#)



### Wine



You've heard it before, and you will undoubtedly hear it again, the Granite Belt produces Queensland's best wines. This reputation is spreading nationally with Granite Belt wineries taking out a swag of awards at the recent [Australian Small Winemakers Show](#).

Actually, Granite Belt producers romped home with half of all the trophies! Of special note the trophy for *National Champion Small Winery* went to Golden Grove Estate and - listen to this - *National Champion Sparkling Wine* went not to a southern producer but to Robert Channon Wines. Other trophies winners were Ballandean Estate (shiraz) and Ridgemill Estate (chardonnay).

A little bird told me that the real hero of the show was the Strange Bird - a clutch of gold and silver medals were won by alternative varieties.

[More...](#)



### Events



During late spring and early summer there are some featured events, and the opportunity to amble through a couple of our regular markets. Here's a snapshot to help you plan your visit:

**African Rhythm and Reds on Top:** November 20

**Sunday Music at Lucas Estate:** November 7 & 21 and December 5 & 19 (07) 4683 6365

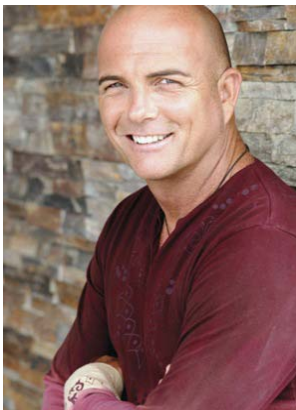
**Market in the Mountains:** 2nd and 4th Sundays/month

**Border Railway Markets:** 3rd Sunday/month at historic Wallangarra Railway Station.

**Music Nights @ Whiskey Gully Wines:** Every 2nd Friday (07) 4683 5100

[More...](#)

## Legends in the Lavender



Five times ARIA winner James Blundell is one of Stanthorpe's famous sons and we're delighted he's now settled back home. Later this month he's the headline act for the second annual *Legends in the Lavender* - hosted by Stanthorpe Rotary Club.

Lavender fields form a backdrop for this event on Saturday 29 November when bush poets, sporting stars and a host of talented musicians gather for this great family day out. This year a portion of proceeds will be donated to Granite Belt Support Services, a local group which plays a vital role in the Stanthorpe community.

It's a great chance to get up close and be entertained (!) by James Blundell, plus local support artists John Rogers and David & Sarah Hume. Gates open 11am, admission just \$25/person with food and bar available - open till late. Book now at Aloomba Lavender on (07) 4686 1191 or (07) 4681 3136.

### Here's how to get the best from us:

- Want a copy of the new Visitor Guide? Email your request now - [send me one](#).
- If you are staying in a self-catering cottage, supermarkets here are open all day Saturday and Sunday, but speciality butcher, baker and greengrocers close at lunchtime on Saturday.
- Don't weigh down the car with your wine purchases, ask the winery to deliver them to you.
- Ask a local @ Stanthorpe Visitor Information Centre daily 9am - 5pm or phone 1800 SO COOL.
- The Granite Belt is delightfully green and the dams are full from spring rains which makes the locals happy. (Might be wise to pack a brolly.)



**Granite Belt Wine & Tourism Inc.**

Phone: 1800 SO COOL

Fax: 07 4681 1200

Post: P O Box 749, Stanthorpe, QLD, 4380

Email: [info@granitebeltwinecountry.com.au](mailto:info@granitebeltwinecountry.com.au)

[Visit Website](#) | [Contact Us](#) | [Unsubscribe](#) | [Send to a Friend](#)

